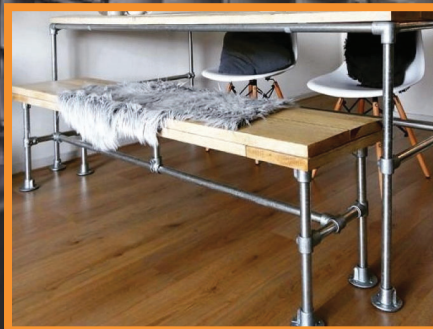
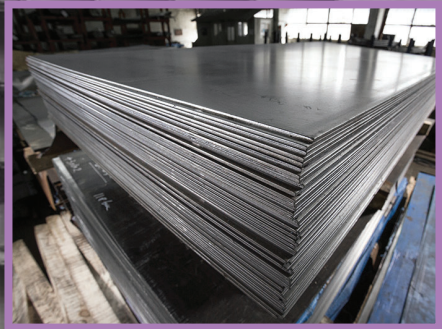
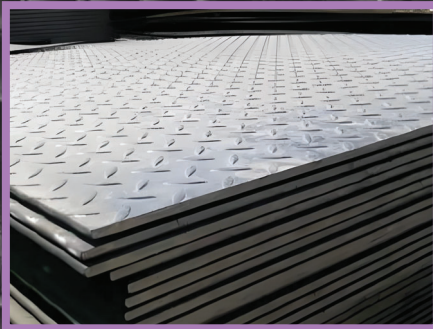
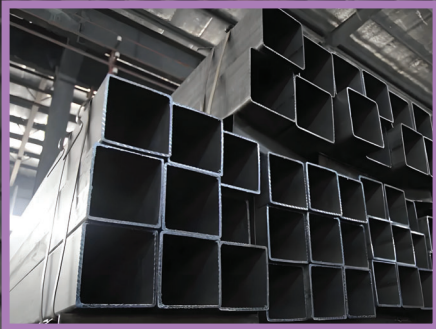


SD Aluminium *Steel Solutions* & *Key Clamp* Systems



Steel Solutions Build to Last
Geometric Sections, Sheets & Key Clamps for Every Need.

2026-2027 Edition



Steel Sections & Key Clamp Systems



Galvanised Steel Sections

<i>Galvanised Steel Rectangular Hollow Section</i>	_____	1
<i>Galvanised Steel Square Hollow Section</i>	_____	2 - 3
<i>Galvanised Steel Unequal Angle Section</i>	_____	3
<i>Galvanised Steel Equal Angle Section</i>	_____	4
<i>Galvanised Steel Circular Hollow Section</i>	_____	5
<i>Galvanised Steel Solid Round Section</i>	_____	6
<i>Galvanised Steel Solid Square Section</i>	_____	6
<i>Galvanised Steel Flat Bar</i>	_____	7

Plain Black Steel Sections

<i>Black Steel Flat Bar</i>	_____	8
-----------------------------	-------	---

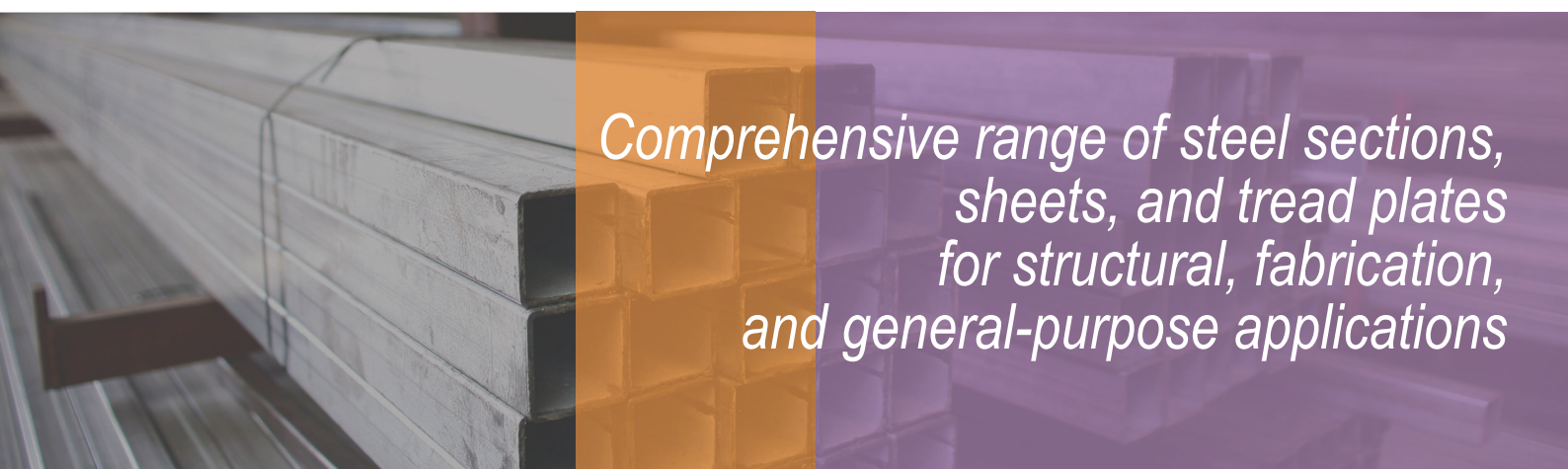
Steel Sheet & Plate Sections

<i>Cold Rolled Steel Flat Sheet</i>	_____	9
<i>Hot Rolled Steel Tread Plate</i>	_____	9
<i>Galvanised Steel Flat Sheet</i>	_____	10

Pipe Key Clamp System

<i>Cast Iron Round Pipe Fitting System</i>	_____	11 - 29
<i>Aluminium Square Pipe Fitting System</i>	_____	29 - 30

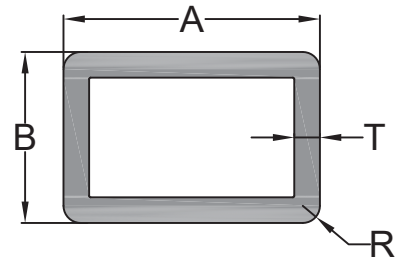
Technical Reference & Conversion Tables	_____	18-19
--	-------	-------



Comprehensive range of steel sections, sheets, and tread plates for structural, fabrication, and general-purpose applications

Galvanised Steel Rectangular Hollow Section

Hot-dip Galvanised - 180g/m² Zinc Coated



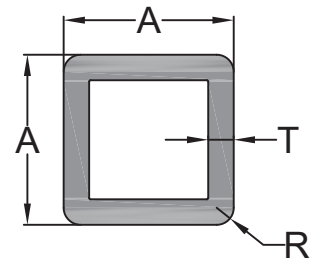
"✓" Stocked Item

"*" Pre-order Only Item
(30-40 working days delivery)

Product Code	Ex Stock	A (mm)	B (mm)	T (mm)	R (mm)	Mass (Kg/m)	Length (m)
RHRA30B20T2R2GALV	✓	30.0	20.0	2.0	2.0	1.354	6.0
RHRA38B25T1.6R2GALV	*	38.0	25.0	1.6	2.0	1.495	6.0
RHRA38B25T2R2GALV	*	38.0	25.0	2.0	2.0	1.764	6.0
RHRA40B20T2R2GALV	✓	40.0	20.0	2.0	2.0	1.730	6.0
RHRA50B25T1.6R2GALV	*	50.0	25.0	1.6	2.0	2.128	6.0
RHRA50B25T2R3GALV	✓	50.0	25.0	2.0	3.0	2.783	6.0
RHRA60B40T2.5R3GALV	✓	60.0	40.0	2.5	3.0	3.650	6.0
RHRA65B35T2.5R3GALV	*	65.0	35.0	2.5	3.0	3.749	6.0
RHRA75B25T2R3GALV	*	75.0	25.0	2.0	3.0	2.887	6.0
RHRA75B50T2.5R3GALV	✓	75.0	50.0	2.5	3.0	4.470	6.0
RHRA75B50T4R3GALV	*	75.0	50.0	4.0	3.0	7.414	6.0
RHRA80B40T3R3GALV	✓	80.0	40.0	3.0	3.0	5.380	6.0
RHRA80B40T3.75R3GALV	*	80.0	40.0	3.75	3.0	6.588	6.0
RHRA80B40T4R3GALV	✓	80.0	40.0	4.0	3.0	6.500	6.0
RHRA80B50T3R3GALV	✓	80.0	50.0	3.0	3.0	5.730	6.0
RHRA100B50T3R3GALV	✓	100.0	50.0	3.0	3.0	6.810	6.0
RHRA120B60T4R3GALV	✓	120.0	60.0	4.0	3.0	10.070	6.0
RHRA125B65T4R3GALV	*	125.0	65.0	4.0	3.0	11.514	6.0
RHRA125B75T3R3GALV	*	125.0	75.0	3.0	3.0	8.770	6.0
RHRA150B50T4R3GALV	✓	150.0	50.0	4.0	3.0	12.150	6.0
RHRA150B50T4R3GALV	✓	150.0	75.0	4.0	3.0	13.260	6.0
RHRA200B50T4R4GALV	*	200.0	50.0	4.0	4.0	14.580	6.0
RHRA200B50T5R3GALV	✓	200.0	50.0	5.0	3.0	18.570	6.0
RHRA200B75T4R5GALV	*	200.0	75.0	4.0	5.0	16.839	6.0
RHRA200B75T5R5GALV	*	200.0	75.0	5.0	5.0	20.655	6.0

Galvanised Steel Square Hollow Section

Hot-dip Galvanised - 180g/m² Zinc Coated



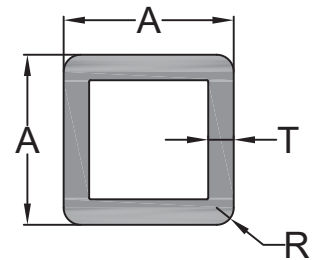
"✓" Stocked Item

"*" Pre-order Only Item
(30-40 working days delivery)

Product Code	Ex Stock	A (mm)	T (mm)	R (mm)	Mass (Kg/m)	Length (m)
SHRA12.7T1.6R2GALV	*	12.7	1.6	2.0	0.539	6.0
SHRA16T1.6R2GALV	*	16.0	1.6	2.0	0.706	6.0
SHRA19T1.6R2GALV	✓	19.0	1.6	2.0	0.833	6.0
SHRA20T1.5R2GALV	✓	20.0	1.5	2.0	0.846	6.0
SHRA20T1.6R2GALV	*	20.0	1.6	2.0	0.910	6.0
SHRA25T1.2R2GALV	*	25.0	1.2	2.0	0.885	6.0
SHRA25T1.5R2GALV	✓	25.0	1.5	2.0	1.080	6.0
SHRA25T2R2GALV	✓	25.0	2.0	2.0	1.463	6.0
SHRA25T2.5R2GALV	*	25.0	2.5	2.0	1.789	6.0
SHRA25T3R2GALV	✓	25.0	3.0	2.0	2.099	6.0
SHRA30T1.6R2GALV	*	30.0	1.6	2.0	1.445	6.0
SHRA30T2R2GALV	✓	30.0	2.0	2.0	1.781	6.0
SHRA30T2.5R2GALV	*	30.0	2.5	2.0	2.099	6.0
SHRA35T1.5R2GALV	*	35.0	1.5	2.0	1.572	6.0
SHRA35T2R2GALV	✓	35.0	2.0	2.0	2.100	6.0
SHRA40T1.5R2GALV	✓	40.0	1.5	2.0	1.786	6.0
SHRA40T1.6R2GALV	*	40.0	1.6	2.0	1.954	6.0
SHRA40T2R2GALV	✓	40.0	2.0	2.0	2.471	6.0
SHRA40T2.5R2GALV	✓	40.0	2.5	2.0	2.981	6.0
SHRA40T3R2GALV	*	40.0	3.0	3.0	3.530	6.0
SHRA40T4R2GALV	✓	40.0	4.0	2.0	4.579	6.0
SHRA50T1.6R3GALV	*	50.0	1.6	3.0	2.463	6.0
SHRA50T2R3GALV	✓	50.0	2.0	3.0	3.053	6.0
SHRA50T2.5R3GALV	*	50.0	2.5	3.0	3.776	6.0
SHRA50T3R3GALV	✓	50.0	3.0	3.0	4.484	6.0
SHRA50T4R3GALV	*	50.0	4.0	3.0	5.851	6.0
SHRA50T5R3GALV	✓	50.0	5.0	3.0	7.155	6.0
SHRA60T3R3GALV	✓	60.0	3.0	3.0	5.380	6.0
SHRA65T1.6R3GALV	*	65.0	1.6	3.0	3.226	6.0
SHRA65T2R3GALV	*	65.0	2.0	3.0	4.007	6.0
SHRA65T2.5R3GALV	*	65.0	2.5	3.0	4.969	6.0
SHRA65T2.75R3GALV	✓	65.0	2.75	3.0	5.315	6.0
SHRA65T3R3GALV	*	65.0	3.0	3.0	5.915	6.0
SHRA65T4R3GALV	*	65.0	4.0	3.0	7.759	6.0
SHRA65T5R3GALV	✓	65.0	5.0	3.0	9.540	6.0
SHRA70T3R3GALV	✓	70.0	3.0	3.0	6.330	6.0
SHRA75T2.5R3GALV	*	75.0	2.5	3.0	5.764	6.0
SHRA75T3R3GALV	✓	75.0	3.0	3.0	6.869	6.0
SHRA75T4R3GALV	*	75.0	4.0	3.0	9.031	6.0
SHRA75T5R3GALV	✓	75.0	5.0	3.0	11.130	6.0

Galvanised Steel Square Hollow Section

Hot-dip Galvanised - 180g/m² Zinc Coated



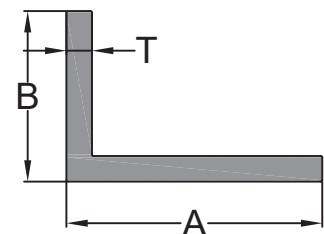
"✓" Stocked Item

"*" Pre-order Only Item
(30-40 working days delivery)

Product Code	Ex Stock	A (mm)	T (mm)	R (mm)	Mass (Kg/m)	Length (m)
SHRA75T6R3GALV	*	75.0	6.0	3.0	13.165	6.0
SHRA80T3R3GALV	✓	80.0	3.0	3.0	7.280	6.0
SHRA89T3.5R3GALV	*	89.0	3.5	3.0	9.516	6.0
SHRA89T5R3GALV	*	89.0	5.0	3.0	13.356	6.0
SHRA89T6GALV	*	89.0	6.0	3.0	15.836	6.0
SHRA90T3R3GALV	✓	90.0	3.0	3.0	8.135	6.0
SHRA90T4.75R3GALV	✓	90.0	4.75	3.0	12.820	6.0
SHRA100T3R3GALV	✓	100.0	3.0	3.0	9.254	6.0
SHRA100T4R3GALV	*	100.0	4.0	3.0	12.211	6.0
SHRA100T5R3GALV	✓	100.0	5.0	3.0	15.105	6.0
SHRA100T6R3GALV	*	100.0	6.0	3.0	17.935	6.0
SHRA120T3R3GALV	✓	120.0	3.0	3.0	11.020	6.0
SHRA125T6R3GALV	*	125.0	6.0	3.0	22.705	6.0
SHRA150T3R3GALV	✓	150.0	3.0	3.0	13.960	6.0
SHRA150T6R3GALV	✓	150.0	6.0	3.0	27.290	6.0
SHRA150T8R3GALV	✓	150.0	8.0	3.0	35.500	6.0
SHRA200T8R3GALV	✓	200.0	8.0	3.0	47.970	6.0

Galvanised Steel Unequal Angle Section

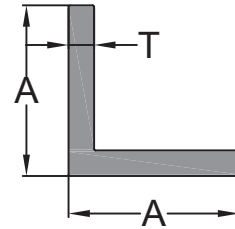
Hot-dip Galvanised - 150g/m² Zinc Coated



Product Code	Ex Stock	A (mm)	B (mm)	T (mm)	Mass (Kg/m)	Length (m)
UAA75B50T6GALV	✓	75.0	50.0	6.0	7.530	6.0
UAA100B75T5GALV	*	100.0	75.0	5.0	8.970	6.0
UAA100B75T7GALV	✓	100.0	75.0	7.0	12.414	6.0
UAA100B75T10GALV	✓	100.0	75.0	10.0	20.693	6.0
UAA125B75T7GALV	✓	125.0	75.0	7.0	14.250	6.0
UAA125B75T8GALV	✓	125.0	75.0	8.0	18.804	6.0
UAA150B100T10GALV	✓	150.0	100.0	10.0	29.381	6.0

Galvanised Steel Equal Angle Section

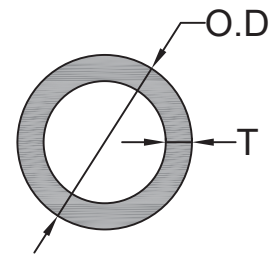
Hot-dip Galvanised - 150g/m² Zinc Coated



"✓" Stocked Item
 "*" Pre-order Only Item
 (30-40 working days delivery)

Product Code	Ex Stock	A (mm)	T (mm)	Mass (Kg/m)	Length (m)
EAA20T3GALV	*	20.0	3.0	0.882	6.0
EAA20T5GALV	*	20.0	5.0	1.391	6.0
EAA25T3GALV	✓	25.0	3.0	1.106	6.0
EAA25T5GALV	*	25.0	5.0	1.789	6.0
EAA30T3GALV	✓	30.0	3.0	1.341	6.0
EAA30T5GALV	*	30.0	5.0	2.186	6.0
EAA40T3GALV	✓	40.0	3.0	1.836	6.0
EAA40T5GALV	✓	40.0	5.0	2.981	6.0
EAA50T3GALV	✓	50.0	3.0	2.313	6.0
EAA50T5GALV	✓	50.0	5.0	3.780	6.0
EAA50T6GALV	*	50.0	6.0	4.484	6.0
EAA60T6GALV	*	60.0	6.0	5.375	6.0
EAA63T6GALV	✓	63.0	6.0	5.800	6.0
EAA70T5GALV	✓	70.0	5.0	5.410	6.0
EAA75T6GALV	✓	75.0	6.0	6.869	6.0
EAA75T8GALV	*	75.0	8.0	8.927	6.0
EAA80T6GALV	✓	80.0	6.0	7.480	6.0
EAA80T8GALV	✓	80.0	8.0	9.800	6.0
EAA80T10GALV	*	80.0	10.0	11.925	6.0
EAA100T6GALV	✓	100.0	6.0	9.254	6.0
EAA100T8GALV	✓	100.0	8.0	12.211	6.0
EAA100T10GALV	✓	100.0	10.0	15.310	6.0
EAA100T12GALV	✓	100.0	12.0	18.130	6.0
EAA125T6GALV	*	125.0	6.0	11.639	6.0
EAA125T8GALV	*	125.0	8.0	15.391	6.0
EAA125T10GALV	✓	125.0	10.0	18.960	6.0

Galvanised Steel Circular Hollow Section



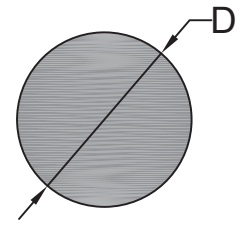
Hot-dip Galvanised - 180g/m² Zinc Coated

"✓" Stocked Item

"*" Pre-order Only Item
(30-40 working days delivery)

Product Code	Ex Stock	O.D (mm)	T (mm)	Mass (Kg/m)	Length (m)
RD19T1.2GALV	*	19.0	1.2	0.527	6.0
RD20T1.5GALV	✓	20.0	1.5	0.684	6.0
RD21T2.2GALV	✓	21.0	2.2	1.021	6.0
RD25T2GALV	✓	25.0	2.0	1.134	6.0
RD25.4T1.2GALV	*	25.4	1.2	0.716	6.0
RD26T2.2GALV	✓	26.0	2.2	1.291	6.0
RD32T2.2GALV	✓	32.0	2.2	1.617	6.0
RD38T3GALV	✓	38.0	3.0	2.620	6.0
RD42T3GALV	✓	42.0	3.0	2.997	6.0
RD48T3GALV	✓	48.0	3.0	3.329	6.0
RD50T3GALV	✓	50.0	3.0	3.522	6.0
RD60T3GALV	✓	60.0	3.0	4.247	6.0
RD60T3.5GALV	✓	60.0	3.5	4.877	6.0
RD76T2GALV	✓	76.0	2.0	3.700	6.0
RD76T3GALV	✓	76.0	3.0	5.470	6.0
RD76T3.25GALV	*	76.0	3.25	5.831	6.0
RD89T3.5GALV	✓	89.0	3.5	7.470	6.0
RD114T3.25GALV	✓	114.0	3.25	8.876	6.0
RD165T3.5GALV	✓	165.0	3.5	13.939	6.0

Galvanised Steel Solid Round Section



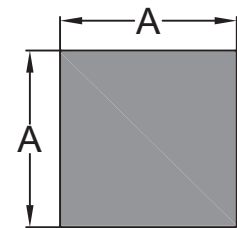
"✓" Stocked Item

"*" Pre-order Only Item
(30-40 working days delivery)

Hot-dip Galvanised - 180g/m² Zinc Coated

Product Code	Ex Stock	D (mm)	Mass (Kg/m)	Length (m)
SRD6L6GALV	*	6.0	0.222	6.0
SRD8L6GALV	✓	8.0	0.395	6.0
SRD10L6GALV	✓	10.0	0.617	6.0
SRD12L6GALV	✓	12.0	0.888	6.0
SRD14L6GALV	✓	14.0	1.209	6.0
SRD16L6GALV	✓	16.0	1.579	6.0
SRD18L6GALV	*	18.0	1.998	6.0
SRD20L6GALV	✓	20.0	2.466	6.0
SRD22L6GALV	*	22.0	2.983	6.0
SRD25L6GALV	*	25.0	3.854	6.0

Galvanised Steel Solid Square Section



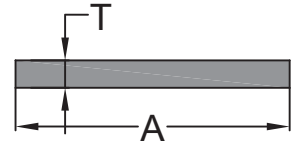
"✓" Stocked Item

"*" Pre-order Only Item
(30-40 working days delivery)

Hot-dip Galvanised - 180g/m² Zinc Coated

Product Code	Ex Stock	A (mm)	Mass (Kg/m)	Length (m)
SQBA8GALV	✓	8.0	0.500	6.0
SQBA10GALV	✓	10.0	0.788	6.0
SQBA12GALV	✓	12.0	1.140	6.0
SQBA14GALV	✓	14.0	1.550	6.0
SQBA16GALV	✓	16.0	2.030	6.0
SQBA20GALV	✓	20.0	3.170	6.0

Galvanised Steel Flat Bar



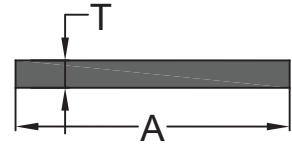
"✓" Stocked Item

"*" Pre-order Only Item
(30-40 working days delivery)

Hot-dip Galvanised - 180g/m² Zinc Coated

Product Code	Ex Stock	A (mm)	T (mm)	Mass (Kg/m)	Length (m)
FBA20T3GALV	✓	20.0	3.0	0.480	6.0
FBA20T5GALV	*	20.0	5.0	0.795	6.0
FBA20T6GALV	*	20.0	6.0	0.954	6.0
FBA25T3GALV	*	25.0	3.0	0.588	6.0
FBA25T4GALV	✓	25.0	4.0	0.800	6.0
FBA25T5GALV	*	25.0	5.0	0.994	6.0
FBA25T6GALV	✓	25.0	6.0	1.193	6.0
FBA30T3GALV	✓	30.0	3.0	0.706	6.0
FBA30T5GALV	*	30.0	5.0	1.193	6.0
FBA30T6GALV	✓	30.0	6.0	1.431	6.0
FBA30T8GALV	*	30.0	8.0	1.908	6.0
FBA30T10GALV	*	30.0	10.0	2.385	6.0
FBA40T3GALV	*	40.0	3.0	0.954	6.0
FBA40T4GALV	✓	40.0	4.0	1.255	6.0
FBA40T5GALV	✓	40.0	5.0	1.590	6.0
FBA50T4GALV	✓	50.0	4.0	1.590	6.0
FBA50T5GALV	✓	50.0	5.0	1.990	6.0
FBA60T6GALV	✓	60.0	6.0	2.860	6.0
FBA80T5GALV	✓	80.0	5.0	3.180	6.0
FBA80T10GALV	✓	80.0	10.0	6.360	6.0
FBA100T5GALV	✓	100.0	5.0	3.930	6.0
FBA100T8GALV	✓	100.0	8.0	6.280	6.0
FBA100T12GALV	✓	100.0	12.0	9.540	6.0
FBA150T6GALV	✓	150.0	6.0	7.150	6.0

Plain Black Steel Flat Bar



Q235B

"✓" Stocked Item

"*" Pre-order Only Item
(30-40 working days delivery)

Product Code	Ex Stock	A (mm)	T (mm)	Mass (Kg/m)	Length (m)
FBA50T6STEELPB	✓	50.0	6.0	2.370	6.0
FBA50T12STEELPB	✓	50.0	12.0	4.770	6.0
FBA60T6STEELPB	✓	60.0	6.0	2.850	6.0
FBA65T10STEELPB	✓	65.0	10.0	5.166	6.0
FBA65T12STEELPB	✓	65.0	12.0	6.199	6.0
FBA70T10STEELPB	✓	70.0	10.0	5.560	6.0
FBA70T12STEELPB	✓	70.0	12.0	6.676	6.0
FBA75T6STEELPB	✓	75.0	6.0	3.580	6.0
FBA75T8STEELPB	✓	75.0	8.0	4.770	6.0
FBA80T6STEELPB	✓	80.0	6.0	3.810	6.0
FBA80T10STEELPB	✓	80.0	10.0	6.360	6.0
FBA80T12STEELPB	✓	80.0	12.0	7.630	6.0
FBA90T6STEELPB	✓	90.0	6.0	4.290	6.0
FBA90T8STEELPB	✓	90.0	8.0	5.720	6.0
FBA90T10STEELPB	✓	90.0	10.0	7.150	6.0
FBA90T12STEELPB	✓	90.0	12.0	8.584	6.0
FBA100T6STEELPB	✓	100.0	6.0	4.770	6.0
FBA100T8STEELPB	✓	100.0	8.0	6.360	6.0
FBA100T10STEELPB	✓	100.0	10.0	7.948	6.0
FBA130T6STEELPB	✓	130.0	6.0	6.200	6.0
FBA150T6STEELPB	✓	150.0	6.0	7.150	6.0
FBA180T6STEELPB	✓	180.0	6.0	8.580	6.0
FBA180T10STEELPB	✓	180.0	10.0	14.310	6.0
FBA200T6STEELPB	✓	200.0	6.0	9.540	6.0
FBA200T10STEELPB	✓	200.0	10.0	15.900	6.0
FBA235T6STEELPB	✓	235.0	6.0	11.200	6.0
FBA235T8STEELPB	✓	235.0	8.0	14.940	6.0
FBA235T10STEELPB	✓	235.0	10.0	18.680	6.0
FBA250T6STEELPB	✓	250.0	6.0	11.900	6.0
FBA250T8STEELPB	✓	250.0	8.0	15.890	6.0
FBA250T10STEELPB	✓	250.0	10.0	19.870	6.0

Cold Rolled Mild Steel Flat Sheet

GB/T 708-2019



"✓" Stocked Item

"*" Pre-order Only Item
(30-40 working days delivery)

Product Code	Ex Stock	Thickness (mm)	Length (mm)	Width (mm)	Weight (kg)	Area (m ²)
CRSS0812524	✓	0.80	1250	2400	19.08	3.0
CRSS112524	✓	1.00	1250	2400	23.85	3.0
CRSS1212524	✓	1.20	1250	2400	28.62	3.0
CRSS1612524	✓	1.60	1250	2400	38.16	3.0
CRSS2012524	✓	2.00	1250	2400	47.70	3.0
CRSS2512524	✓	2.50	1250	2400	58.89	3.0
CRSS3012524	✓	3.00	1250	2400	70.65	3.0

Main Applications:

- Automotive Industry:** Car bodies and structural components.
- Appliances:** Home appliances like refrigerators and washing machines.
- Construction:** Roofing materials and wall panels.
- Furniture:** Metal furniture and cabinetry and etc.

Hot Rolled Mild Steel Tread plate

GB/T 3277-2021



Product Code	Ex Stock	Thickness (mm)	Length (mm)	Width (mm)	Weight (kg)	Area (m ²)
HRSTP312524	✓	3.00	1250	2400	75.13	3.0
HRSTP3153	✓	3.00	1500	3000	112.69	4.5
HRSTP412524	✓	4.00	1250	2400	100.17	3.0
HRSTP4153	✓	4.00	1500	3000	150.26	4.5
HRSTP512524	✓	5.00	1250	2400	125.21	3.0
HRSTP612524	✓	6.00	1250	2400	150.26	3.0
HRSTP6153	✓	6.00	1500	3000	225.38	4.5
HRSTP812524	✓	8.00	1250	2400	200.34	3.0
HRSTP1012524	✓	10.00	1250	2400	241.80	3.0

Main Applications:

- Industrial Flooring:** Platforms, stair treads, and walkways.
- Vehicle and Trailer Beds:** Flooring for trucks and trailers.
- Construction:** Ramps and dock plates.
- Marine Applications:** Decks and offshore structures and etc.

Galvanised Steel Flat Sheet

Z275 (20 microns)



"✓" Stocked Item

"✳" Pre-order Only Item
(30-40 working days delivery)

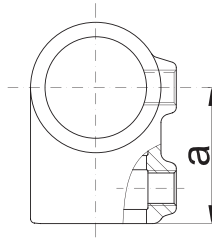
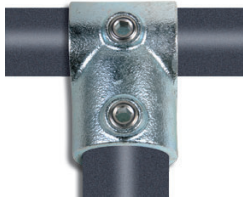
Product Code	Ex Stock	Thickness (mm)	Length (mm)	Width (mm)	Weight (kg)	Area (m ²)
GALVS05512524	✓	0.55	1250	2400	14.13	3.0
GALVS07512524	✓	0.75	1250	2400	18.84	3.0
GALVS09512524	✓	0.95	1250	2400	23.55	3.0
GALVS11512524	✓	1.15	1250	2400	28.26	3.0
GALVS15512524	✓	1.55	1250	2400	37.68	3.0
GALVS212524	✓	2.00	1250	2400	46.98	3.0
GALVS2512524	✓	2.50	1250	2400	59.55	3.0
GALVS312524	✓	3.00	1250	2400	71.67	3.0

Main Applications:

- Construction Industry:** Roofing, wall cladding, flashing, and gutters.
- Fencing & Outdoor Structures:** Gates, garden sheds, and protective barriers.
- HVAC & Ducting:** Ventilation systems, air ducts, and enclosure panels.
- Fabrication & General Engineering:** Structural framing, trailer panel, and machinery covers.

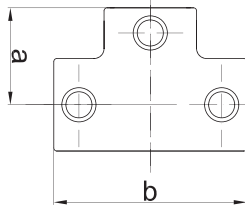
Cast Iron Pipe Fitting System

Cast Iron Round Pipe Fitting
T-Clamp (Short)



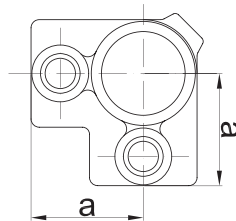
Code	Fit Size (mm)	Dimension (mm)			
		a	b	c	d
* SDA101S	17.2	30			
* SDA101T	21.3	35			
* SDA101A	26.9	41			
* SDA101B	33.7	46			
* SDA101C	42.4	60			
* SDA101D	48.3	68			
* SDA101E	60.3	84			
*SDA101BA	33.7/26.9	46			
*SDA101CB	42.4/33.7	57			
*SDA101CD	42.4/48.3	68			
*SDA101DC	48.3/42.4	63			
*SDA101ED	60.3/48.3	74			

Cast Iron Round Pipe Fitting
T-Clamp (Standard)



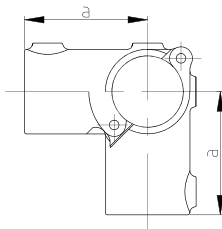
Code	Fit Size (mm)	Dimensions (mm)			
		a	b	c	d
* SDA104S	17.2	30	60		
✓ SDA104A	26.9	41	82		
✓ SDA104B	33.7	46	92		
✓ SDA104C	42.4	60	120		
✓ SDA104D	48.3	68	136		
✓ SDA104E	60.3	84	168		

Cast Iron Round Pipe Fitting
3-Way Clamp



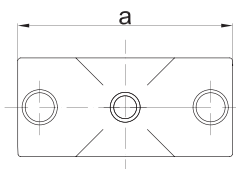
Code	Fit Size (mm)	Dimensions (mm)			
		a	b	c	d
* SDA116S	17.2	30			
* SDA116T	21.3	35			
✓ SDA116A	26.9	40			
✓ SDA116B	33.7	48			
✓ SDA116C	42.4	60			
✓ SDA116D	48.3	68			
✓ SDA116E	60.3	86			

Cast Iron Round Pipe Fitting
3-Way Clamp



Code	Fit Size (mm)	Dimensions (mm)			
		a	b	c	d
*SDA116AD	48.3	88			

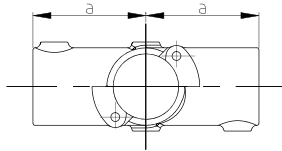
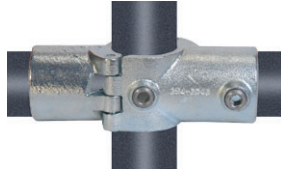
Cast Iron Round Pipe Fitting
Cross Clamp



Code	Fit Size (mm)	Dimensions (mm)			
		a	b	c	d
* SDA119T	21.3	70			
✓ SDA119A	26.9	80			
✓ SDA119B	33.7	96			
✓ SDA119C	42.4	120			
*SDA119CD	42.4/48.3	122			
✓ SDA119D	48.3	135			
✓ SDA119E	60.3	168			

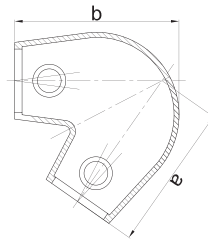
Cast Iron Pipe Fitting System

Cast Iron Round Pipe Fitting Cross Clamp



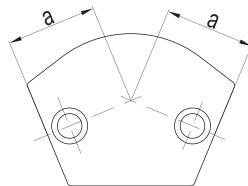
Code	Fit Size (mm)	Dimensions (mm)			
		a	b	c	d
* SDA119AD	48.3	88			

Cast Iron Round Pipe Fitting 30° Elbow



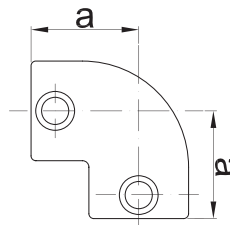
Code	Fit Size (mm)	Dimensions (mm)			
		a	b	c	d
* SDA123D	48.3	120	134		

Cast Iron Round Pipe Fitting 120° Elbow



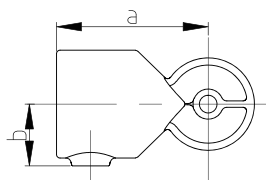
Code	Fit Size (mm)	Dimensions (mm)			
		a	b	c	d
* SDA124B	33.7	40			
* SDA124C	42.4	47.5			
* SDA124D	48.3	44			

Cast Iron Round Pipe Fitting 90° Elbow



Code	Fit Size (mm)	Dimensions (mm)			
		a	b	c	d
* SDA125S	17.2	30			
* SDA125T	21.3	35			
✓ SDA125A	26.9	41			
✓ SDA125B	33.7	46			
✓ SDA125C	42.4	60			
✓ SDA125D	48.3	68			
* SDA125DC	48.3/42.4	68/60			
✓ SDA125E	60.3	84			

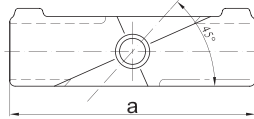
Cast Iron Round Pipe Fitting 90° Elbow



Code	Fit Size (mm)	Dimensions (mm)			
		a	b	c	d
✓ SDA125HB	33.7	62	27.2		
✓ SDA125HC	42.4	75	31.7		
✓ SDA125HD	48.3	85	34.7		

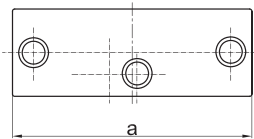
Cast Iron Pipe Fitting System

Cast Iron Round Pipe Fitting
Cross Clamp (45°)



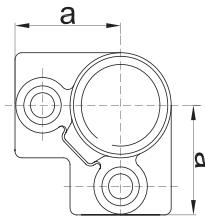
Code	Fit Size (mm)	Dimensions (mm)			
		a	b	c	d
* SDA126C	42.4	190			
* SDA126D	48.3	218			

Cast Iron Round Pipe Fitting
T-Clamp (45°)



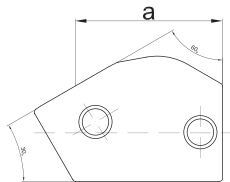
Code	Fit Size (mm)	Dimensions (mm)			
		a	b	c	d
* SDA127B	33.7	119			
* SDA127C	42.4	147			
* SDA127D	48.3	164.5			

Cast Iron Round Pipe Fitting
3-Way 90° Elbow



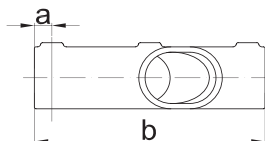
Code	Fit Size (mm)	Dimensions (mm)			
		a	b	c	d
* SDA128S	17.2	30			
* SDA128T	21.3	35			
✓ SDA128A	26.9	40			
✓ SDA128B	33.7	48			
✓ SDA128C	42.4	60			
✓ SDA128D	48.3	68			
✓ SDA128E	60.3	85			

Cast Iron Round Pipe Fitting
T-Clamp (30°)



Code	Fit Size (mm)	Dimensions (mm)			
		a	b	c	d
* SDA129A	26.9	75			
* SDA129B	33.7	70			
* SDA129C	42.4	85			
* SDA129D	48.3	90			

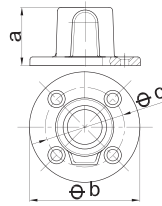
Cast Iron Round Pipe Fitting
Cross Clamp (45°)



Code	Fit Size (mm)	Dimensions (mm)			
		a	b	c	d
* SDA130B	33.7	14.5	147		
* SDA130C	42.4	16.5	199		
* SDA130D	48.3	16.5	217		

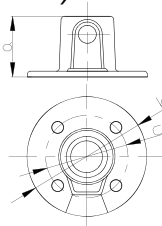
Cast Iron Pipe Fitting System

Cast Iron Round Pipe Fitting **Base Plate** (Round)



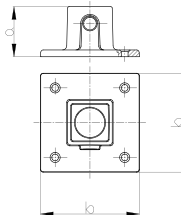
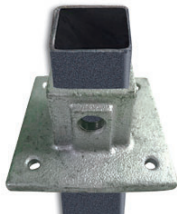
Code	Fit Size (mm)	Dimensions (mm)			
		a	b	c	d
* SDA131T	21.3	32	74	55.5	
* SDA131A	26.9	42	83	57	
* SDA131B	33.7	48	89	65	
* SDA131C	42.4	50	102	76	
* SDA131D	48.3	59	114	88.5	
* SDA131E	60.3	64	127	95	

Cast Iron Round Pipe Fitting **Base Plate** (Round-Continuous)



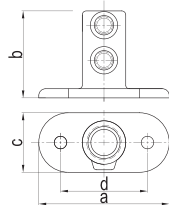
Code	Fit Size (mm)	Dimensions (mm)			
		a	b	c	d
*SDA131TT	21.3	32	74	55.5	
*SDA131TA	26.9	42	83	57	
*SDA131TB	33.7	48	89	65	
*SDA131TC	42.4	50	102	76	
*SDA131TD	48.3	59	114	88.5	
*SDA131TE	60.3	64	127	95	

Cast Iron Round Pipe Fitting **Base Plate** (Square-Continuous)



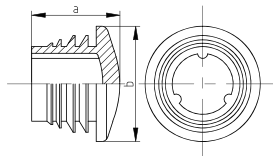
Code	Fit Size (mm)	Dimensions (mm)			
		a	b	c	d
*SDA131FD	48.3	116	82	42	8

Cast Iron Round Pipe Fitting **Base Plate** (Square-Continuous)



Code	Fit Size (mm)	Dimensions (mm)			
		a	b	c	d
✓ SDA132A	26.9	105	60	52	76
✓ SDA132B	33.7	127	71	62	89
✓ SDA132C	42.4	139	84	72	101
✓ SDA132D	48.3	152	89	86	114
✓ SDA132E	60.3	165	104	96	127

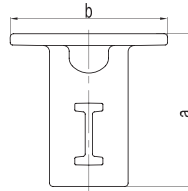
Cast Iron Round Pipe Fitting **Pipe End Cap** (Round)



Code	Fit Size (mm)	Dimensions (mm)			
		a	b	c	d
✓ SDA133B	33.7	26	34		
✓ SDA133C	42.4	30	42.5		
✓ SDA133D	48.3	31	48		
✓ SDA133E	60.3	26	60		

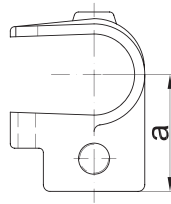
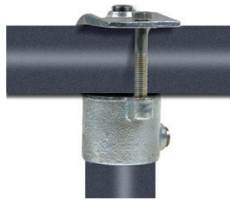
Cast Iron Pipe Fitting System

Cast Iron Round Pipe Fitting **Base Plate** (Round)



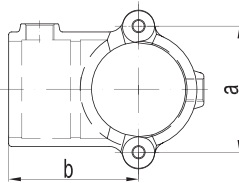
Code	Fit Size (mm)	Dimensions (mm)			
		a	b	c	d
* SDA134A	26.9	105	105		
* SDA134B	33.7	123	127		
* SDA134C	42.4	136	140		
* SDA134D	48.3	136	140		

Cast Iron Round Pipe Fitting **T-Clamp** (Clip-on)



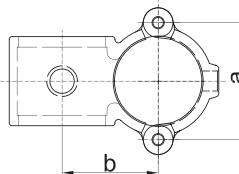
Code	Fit Size (mm)	Dimensions (mm)			
		a	b	c	d
* SDA135A	26.9	50			
* SDA135B	33.7	53			
* SDA135C	42.4	67			
* SDA135D	48.3	77			
* SDA135E	60.3	90.5			

Cast Iron Round Pipe Fitting **T-Clamp** (Clip-on)



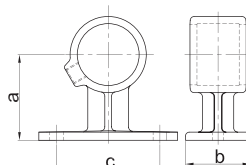
Code	Fit Size (mm)	Dimensions (mm)			
		a	b	c	d
* SDA136B	33.7	53.5	52		
* SDA136C	42.4	61.4	60		
* SDA136D	48.3	67	69		

Cast Iron Round Pipe Fitting **Cross Clamp** (Clip-on)



Code	Fit Size (mm)	Dimensions (mm)			
		a	b	c	d
* SDA137B	33.7	53.5	41		
* SDA137C	42.4	61.4	50		
* SDA137D	48.3	67	55		

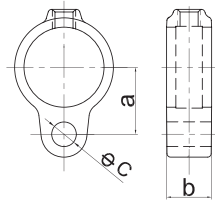
Cast Iron Round Pipe Fitting **Handrail Bracket**



Code	Fit Size (mm)	Dimensions (mm)			
		a	b	c	d
* SDA143S	17.2	39	32	45	
✓ SDA143A	26.9	55	44	57	
✓ SDA143B	33.7	57	44	62	
✓ SDA143C	42.4	63	44	76	
✓ SDA143D	48.3	67	50	82.5	

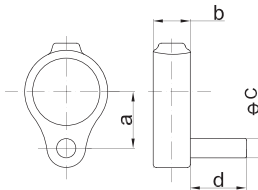
Cast Iron Pipe Fitting System

Cast Iron Round Pipe Fitting Gate Eye Fitting



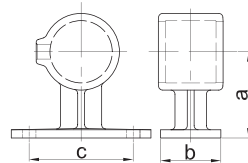
Code	Fit Size (mm)	Dimensions (mm)			
		a	b	c	d
* SDA138A	26.9	30	25	14	
* SDA138B	33.7	33	25	14	
* SDA138C	42.4	38	25	14	
* SDA138D	48.3	41	25	14	

Cast Iron Round Pipe Fitting Gate Pin Fitting



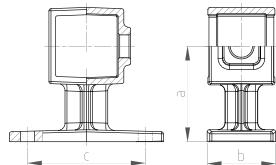
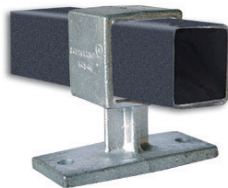
Code	Fit Size (mm)	Dimensions (mm)			
		a	b	c	d
* SDA140A	26.9	30	25	13	38
* SDA140B	33.7	33	25	13	38
* SDA140C	42.4	38	25	12	38
* SDA140D	48.3	41	25	12	38

Cast Iron Round Pipe Fitting Handrail Bracket (Round)



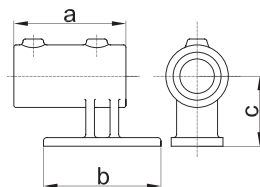
Code	Fit Size (mm)	Dimensions (mm)			
		a	b	c	d
✓SDA143WA	26.9	55	44	57.5	
✓SDA143WB	33.7	57	44	63	
✓SDA143WC	42.4	63	44	76	
✓SDA143WD	48.3	67	48	82.5	

Cast Iron Round Pipe Fitting Handrail Bracket (Square)



Code	Fit Size (mm)	Dimensions (mm)			
		a	b	c	d
* SDA143FWD	48.3	67	48	82.5	

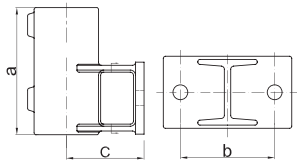
Cast Iron Round Pipe Fitting Handrail Side Support (Vertical Flange)



Code	Fit Size (mm)	Dimensions (mm)			
		a	b	c	d
* SDA144B	33.7	104	96	65	
* SDA144C	42.4	112	110	64.5	
* SDA144D	48.3	120	123	65	

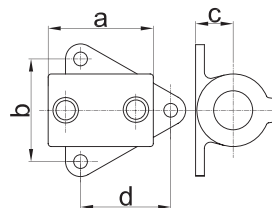
Cast Iron Pipe Fitting System

Cast Iron Round Pipe Fitting **Handrail Side Support** (Horizontal Flange)



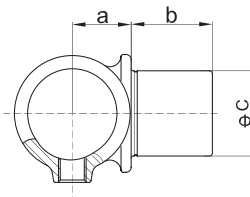
Code	Fit Size (mm)	Dimensions (mm)			
		a	b	c	d
* SDA145B	33.7	102	67	57	
* SDA145C	42.4	111	73	64	
* SDA145D	48.3	119	89	73	

Cast Iron Round Pipe Fitting **Side Palm Wall Fixing**



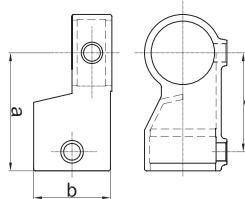
Code	Fit Size (mm)	Dimensions (mm)			
		a	b	c	d
✓ SDA146B	33.7	76	71	24	63
✓ SDA146C	42.4	83	82	28	72
✓ SDA146D	48.3	89	86	31	78

Cast Iron Round Pipe Fitting **T-Clamp** (Internal Swivel)



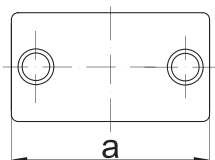
Code	Fit Size (mm)	Dimensions (mm)			
		a	b	c	d
* SDA147B	33.7	23	29	34	
* SDA147C	42.4	26	37	42	
* SDA147D	48.3	30	42	48	

Cast Iron Round Pipe Fitting **Inline T-Clamp** (Short Swivel)



Code	Fit Size (mm)	Dimensions (mm)			
		a	b	c	d
* SDA148A	26.9	53	37	42	
* SDA148B	33.7	59	46	48	
* SDA148C	42.4	73	55	58.5	
* SDA148D	48.3	93	60.5	78	
* SDA148E	60.3	110	73	93.5	

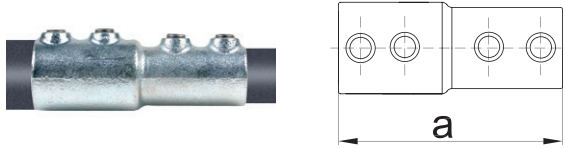
Cast Iron Round Pipe Fitting **Sleeve Joint**



Code	Fit Size (mm)	Dimensions (mm)			
		a	b	c	d
* SDA149S	17.2	60			
✓ SDA149A	26.9	76			
✓ SDA149B	33.7	89			
✓ SDA149C	42.4	102			
✓ SDA149D	48.3	102			
✓ SDA149E	60.3	120			

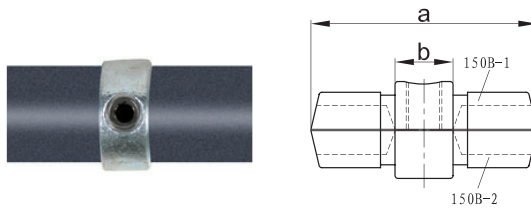
Cast Iron Pipe Fitting System

Cast Iron Round Pipe Fitting **Sleeve Joint** (33.7 - 26.9)



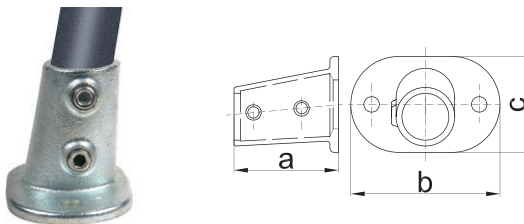
Code	Fit Size (mm)	Dimensions (mm)			
		a	b	c	d
*SDA149BA	33.7/26.9	130			

Cast Iron Round Pipe Fitting **Inline Internal Joint**



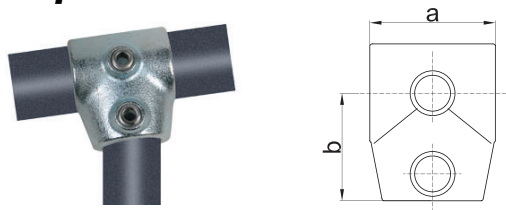
Code	Fit Size (mm)	Dimensions (mm)			
		a	b	c	d
* SDA150A	26.9	76	22		
* SDA150B	33.7	78	20		
* SDA150C	42.4	78	20		
* SDA150D	48.3	78	20		

Cast Iron Round Pipe Fitting **Flange Base** (Pivot 0°-11°)



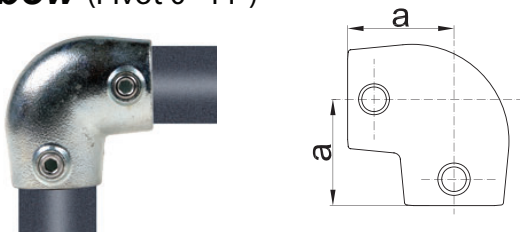
Code	Fit Size (mm)	Dimensions (mm)			
		a	b	c	d
*SDA152B	33.7	90	127	80	
*SDA152C	42.4	98	140	90	
*SDA152D	48.3	99	153	96	

Cast Iron Round Pipe Fitting **T-Clamp** (Pivot 0°-11°)



Code	Fit Size (mm)	Dimensions (mm)			
		a	b	c	d
*SDA153B	33.7	60	46		
*SDA153C	42.4	70	60		
*SDA153D	48.3	78	68		

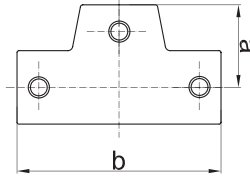
Cast Iron Round Pipe Fitting **90° Elbow** (Pivot 0°-11°)



Code	Fit Size (mm)	Dimensions (mm)			
		a	b	c	d
* SDA154B	33.7	46			
* SDA154C	42.4	60			
* SDA154D	48.3	68			

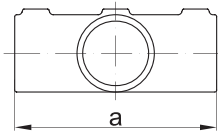
Cast Iron Pipe Fitting System

Cast Iron Round Pipe Fitting **Short T-Clamp** (Pivot 0°-11°)



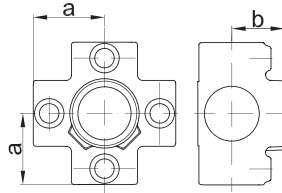
Code	Fit Size (mm)	Dimensions (mm)			
		a	b	c	d
✓SDA155B	33.7	46	104		
✓SDA155C	42.4	60	145		
✓SDA155D	48.3	68	168		

Cast Iron Round Pipe Fitting **Inline Internal Joint**



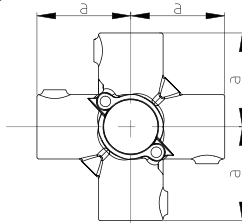
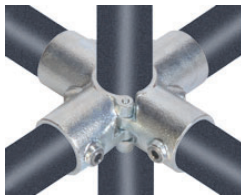
Code	Fit Size (mm)	Dimensions (mm)			
		a	b	c	d
*SDA156B	33.7	110			
*SDA156C	42.4	140			
*SDA156D	48.3	158			

Cast Iron Round Pipe Fitting **4-Way Cross Clamp**



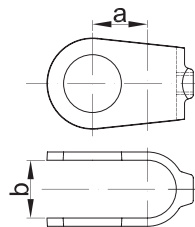
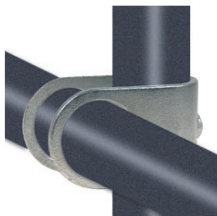
Code	Fit Size (mm)	Dimensions (mm)			
		a	b	c	d
*SDA158T	21.3	35	35		
*SDA158A	26.9	41	32		
*SDA158B	33.7	46	35		
*SDA158C	42.4	60	43.5		
*SDA158D	48.3	68	49.5		

Cast Iron Round Pipe Fitting **4-Way Cross Clamp**



Code	Fit Size (mm)	Dimensions (mm)			
		a	b	c	d
*SDA158AD	48.3	88			

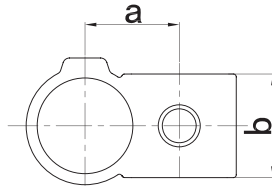
Cast Iron Round Pipe Fitting **Crossover Clamp** (90°)



Code	Fit Size (mm)	Dimensions (mm)			
		a	b	c	d
*SDA160A	26.9	27	28		
*SDA160B	33.7	34	35		
*SDA160C	42.4	43	45.4		
*SDA160D	48.3	49	51.6		
*SDA160E	60.3	61	63		

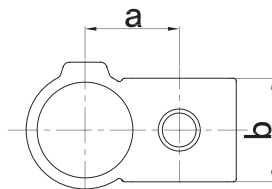
Cast Iron Pipe Fitting System

Cast Iron Round Pipe Fitting
Crossover Clamp (90°)



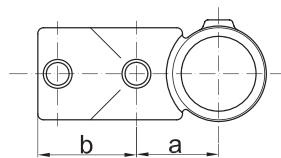
Code	Fit Size (mm)	Dimensions (mm)			
		a	b	c	d
*SDA161A	26.9	38	31.5		
*SDA161B	33.7	41	38.5		
*SDA161C	42.4	50	45		
*SDA161D	48.3	50	55		
*SDA161E	60.3	64	61		

Cast Iron Round Pipe Fitting
Crossover Clamp (90°)



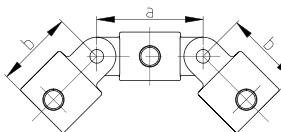
Code	Fit Size (mm)	Dimensions (mm)			
		a	b	c	d
*SDA161CB	42.4/33.7	45	46		
*SDA161DB	48.3/33.7	45	38.5		
*SDA161DC	48.3/42.4	49	45		
*SDA161ED	60.3/48.3	58	55		

Cast Iron Round Pipe Fitting
Crossover & T-Clamp



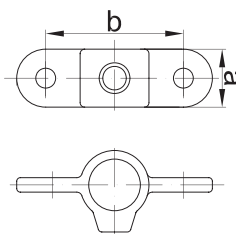
Code	Fit Size (mm)	Dimensions (mm)			
		a	b	c	d
*SDA165A	26.9	35	40		
*SDA165B	33.7	40	48		
*SDA165C	42.4	50	60		
*SDA165D	48.3	56	67		

Cast Iron Round Pipe Fitting
2-Way Swivel Key Clamp



Code	Fit Size (mm)	Dimensions (mm)			
		a	b	c	d
*SDA167A	26.9	76	58.5		
*SDA167B	33.7	86	61		
*SDA167C	42.4	95	69		
*SDA167D	48.3	100	77		
*SDA167E	60.3	124	90.5		

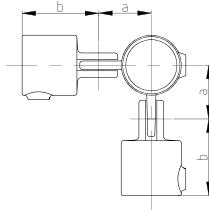
Cast Iron Round Pipe Fitting
2 Male Swivel Socket



Code	Fit Size (mm)	Dimensions (mm)			
		a	b	c	d
*SDA167MA	26.9	32	76		
*SDA167MB	33.7	40	86		
*SDA167MC	42.4	45	95		
*SDA167MD	48.3	48	105		
*SDA167ME	60.3	38	124		

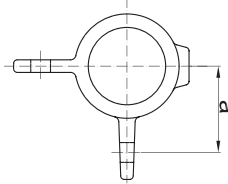
Cast Iron Pipe Fitting System

Cast Iron Round Pipe Fitting 90° Corner Swivel Clamp



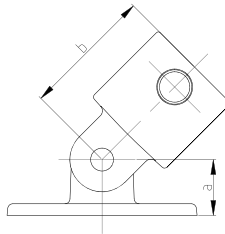
Code	Fit Size (mm)	Dimensions (mm)			
		a	b	c	d
* SDA168A	26.9	38	58.5		
* SDA168B	33.7	43.5	61		
* SDA168C	42.4	47	69		
* SDA168D	48.3	53	77		
* SDA168E	60.3	62	90.5		

Cast Iron Round Pipe Fitting 2 Male Swivel Socket (90°)



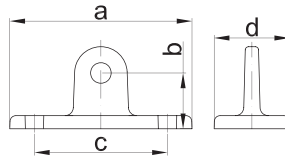
Code	Fit Size (mm)	Dimensions (mm)			
		a	b	c	d
*SDA168MA	26.9	38			
*SDA168MB	33.7	43.5			
*SDA168MC	42.4	48			
*SDA168MD	48.3	53			
*SDA168ME	60.3	62			

Cast Iron Round Pipe Fitting Swivel Wall Strut



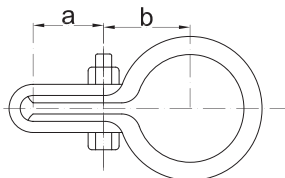
Code	Fit Size (mm)	Dimensions (mm)			
		a	b	c	d
✓SDA169A	26.9	32	58.5		
✓SDA169B	33.7	32	61		
✓SDA169C	42.4	32	69		
✓SDA169D	48.3	32	77		
✓SDA169E	60.3	32	95		

Cast Iron Round Pipe Fitting Base Swivel Socket



Code	Fit Size (mm)	Dimensions (mm)			
		a	b	c	d
* SDA169MM		112	32	85	51
* SDA169MA	26.9	111	40	81	46
* SDA169MB	33.7	112	32	85	52
* SDA169MC	42.4	112	32	85	52
* SDA169MD	48.3	112	32	85	52

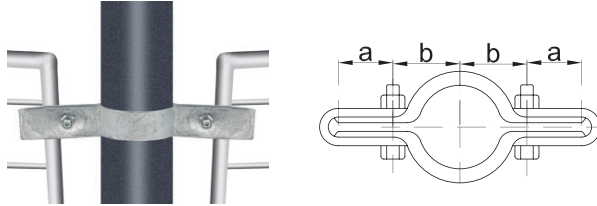
Cast Iron Round Pipe Fitting Mesh Panel Clip (Single Side)



Code	Fit Size (mm)	Dimensions (mm)			
		a	b	c	d
* SDA170A	26.9	22	25		
* SDA170B	33.7	25	28		
* SDA170C	42.4	25	33		
* SDA170D	48.3	25	35		
* SDA170E	60.3	25	40		

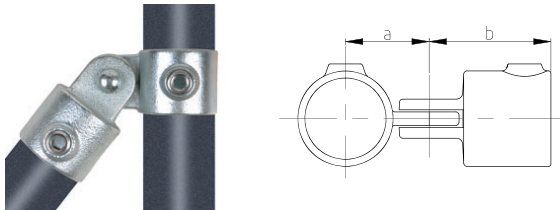
Cast Iron Pipe Fitting System

Cast Iron Round Pipe Fitting Mesh Panel Clip (Double Side)



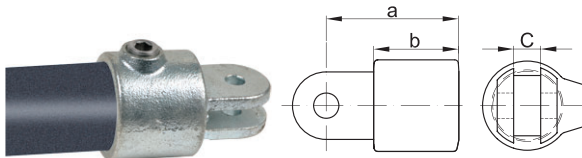
Code	Fit Size (mm)	Dimensions (mm)			
		a	b	c	d
* SDA171A	26.9	22	25		
* SDA171B	33.7	25	28		
* SDA171C	42.4	25	33		
* SDA171D	48.3	25	35		
* SDA171E	60.3	25	40		

Cast Iron Round Pipe Fitting Single Swivel Joint



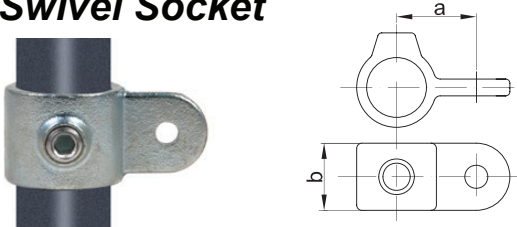
Code	Fit Size (mm)	Dimensions (mm)			
		a	b	c	d
* SDA173S	17.2	26	41		
✓ SDA173A	26.9	38	58.5		
✓ SDA173B	33.7	43.5	61		
✓ SDA173C	42.4	47	69		
✓ SDA173D	48.3	53	77		
✓ SDA173E	60.3	62	90.5		

Cast Iron Round Pipe Fitting Female Swivel Socket



Code	Fit Size (mm)	Dimensions (mm)			
		a	b	c	d
* SDA173FA	26.9	61	38	11.2	
* SDA173FB	33.7	61	38	11.2	
* SDA173FC	42.4	69	46	11.2	
* SDA173FD	48.3	77	55	11.2	
* SDA173FE	60.3	90.5	63	11.2	

Cast Iron Round Pipe Fitting 1 Male Swivel Socket



Code	Fit Size (mm)	Dimensions (mm)			
		a	b	c	d
* SDA173MA	26.9	40	38		
* SDA173MB	33.7	43.5	38		
* SDA173MC	42.4	48	44.5		
* SDA173MD	48.3	53	44.5		
* SDA173ME	60.3	62	50.5		

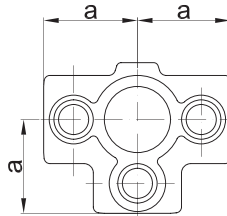
Cast Iron Round Pipe Fitting Side Mesh Panel Clip



Code	Fit Size (mm)	Dimensions (mm)			
		a	b	c	d
* SDA175MD	48.3	77	56	4	

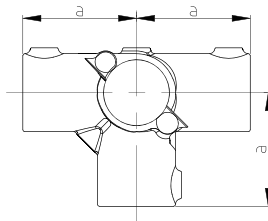
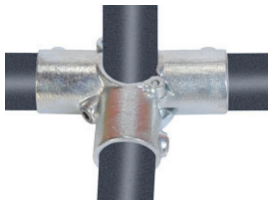
Cast Iron Pipe Fitting System

Cast Iron Round Pipe Fitting
3-Way T-Clamp (Standard)



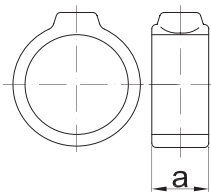
Code	Fit Size (mm)	Dimensions (mm)			
		a	b	c	d
*SDA176T	21.3	35			
*SDA176A	26.9	40			
*SDA176B	33.7	46			
*SDA176C	42.4	60			
*SDA176D	48.3	68			
*SDA176E	60.3	84.5			

Cast Iron Round Pipe Fitting
3-Way T-Clamp (Long)



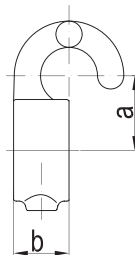
Code	Fit Size (mm)	Dimensions (mm)			
		a	b	c	d
*SDA176AD	48.3	88			

Cast Iron Round Pipe Fitting
Locking Collar



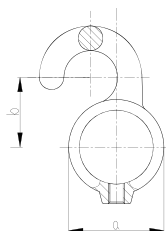
Code	Fit Size (mm)	Dimensions (mm)			
		a	b	c	d
* SDA179A	26.9	22			
* SDA179B	33.7	25			
* SDA179C	42.4	25			
* SDA179D	48.3	32			

Cast Iron Round Pipe Fitting
Hook Clamp



Code	Fit Size (mm)	Dimensions (mm)			
		a	b	c	d
* SDA182S	17.2	22.5	25		
* SDA182A	26.9	32	25		
* SDA182B	33.7	34	25		
* SDA182C	42.4	39	25		
* SDA182D	48.3	41	25		

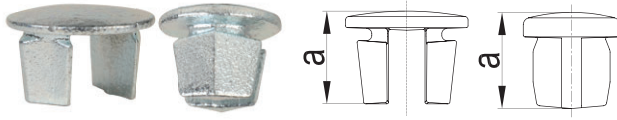
Cast Iron Round Pipe Fitting
Hook Ring



Code	Fit Size (mm)	Dimensions (mm)			
		a	b	c	d
*SDA182TA	26.9		32		
*SDA182TB	33.7		34		
*SDA182TC	42.4		39		
*SDA182TD	48.3		41		

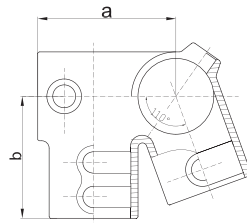
Cast Iron Pipe Fitting System

Cast Iron Round Pipe Fitting Pipe End Cap



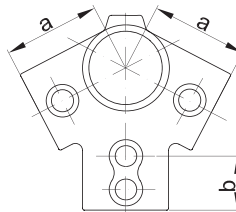
Code	Fit Size (mm)	Dimensions (mm)			
		a	b	c	d
*SDA184S		17.2			
*SDA184A	26.9	27.5			
*SDA184B	33.7	26.5			
*SDA184C	42.4	29.4			
*SDA184D	48.3	28			
*SDA184E	60.3	38			

Cast Iron Round Pipe Fitting Eaves Roof Clamp



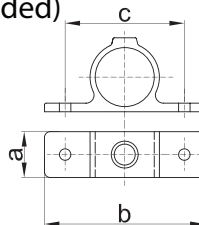
Code	Fit Size (mm)	Dimensions (mm)			
		a	b	c	d
*SDA185A	26.9	55	60		
*SDA185C	42.4	82	80		
*SDA185D	48.3	94	83		

Cast Iron Round Pipe Fitting Roof Ridge Clamp



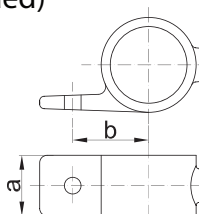
Code	Fit Size (mm)	Dimensions (mm)			
		a	b	c	d
*SDA191A	26.9	52	30		
*SDA191C	42.4	72	36		
*SDA191D	48.3	70	39.5		

Cast Iron Round Pipe Fitting Fixing Bracket (Double-sided)



Code	Fit Size (mm)	Dimensions (mm)			
		a	b	c	d
*SDA198S	17.2	18	65	47	
*SDA198A	26.9	35	128	94	
*SDA198B	33.7	30	120	86	
*SDA198C	42.4	33	130	95	
*SDA198D	48.3	35	140	104	

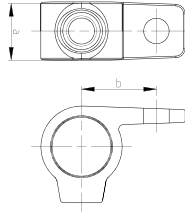
Cast Iron Round Pipe Fitting Fixing Bracket (Single-sided)



Code	Fit Size (mm)	Dimensions (mm)			
		a	b	c	d
*SDA199B	33.7	30	43		
*SDA199C	42.4	33	47.5		
*SDA199D	48.3	35	52		

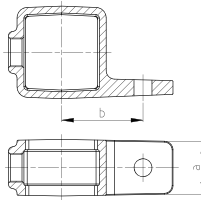
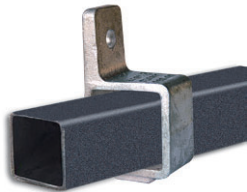
Cast Iron Pipe Fitting System

Cast Iron Round Pipe Fitting
Fixing Bracket (Single-sided)



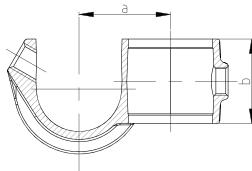
Code	Fit Size (mm)	Dimensions (mm)			
		a	b	c	d
* SDA199S	17.2	18	23.5		
* SDA199A	26.9	35	47		

Cast Iron Round Pipe Fitting
Fixing Bracket (Square Single-sided)



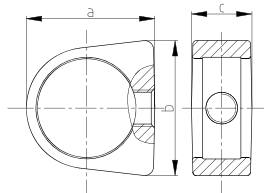
Code	Fit Size (mm)	Dimensions (mm)			
		a	b	c	d
* SDA199FD	48.3	30.9	47.5		

Cast Iron Round Pipe Fitting
Cross Clamp (Clip-on)



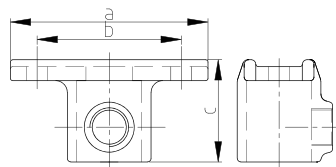
Code	Fit Size (mm)	Dimensions (mm)			
		a	b	c	d
* SDA201D	48.3	55.3	51.5		

Cast Iron Round Pipe Fitting
Locking Collar



Code	Fit Size (mm)	Dimensions (mm)			
		a	b	c	d
* SDA235C	42.4	58.5	62.6	27.5	

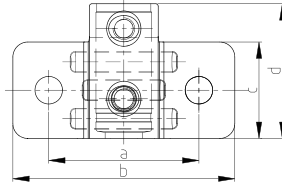
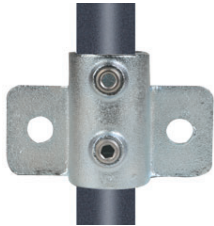
Cast Iron Round Pipe Fitting
Base Flange



Code	Fit Size (mm)	Dimensions (mm)			
		a	b	c	d
* SDA20X85	26.9	85	62	44	
* SDA20X110	26.9	110	85	44	
* SDA20X165	26.9	165	140	44	

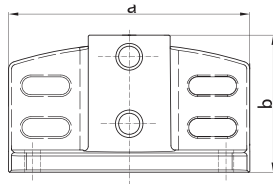
Cast Iron Pipe Fitting System

Cast Iron Round Pipe Fitting
Side Palm Key Clamp (Heavy-duty)



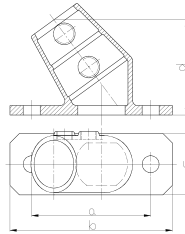
Code	Fit Size (mm)	Dimensions (mm)			
		a	b	c	d
* SDA246B	33.7	100.5	148	64	90
* SDA246C	42.4	100.5	148	64	90
* SDA246D	48.3	102	145	75	90

Cast Iron Round Pipe Fitting
Base Flange (With Toeboard)



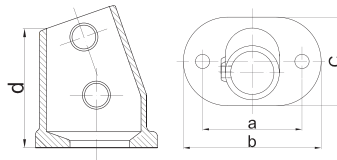
Code	Fit Size (mm)	Dimensions (mm)			
		a	b	c	d
* SDA247C	42.4	162	90		
* SDA247D	48.3	162	90		

Cast Iron Round Pipe Fitting
Angle Base Flange



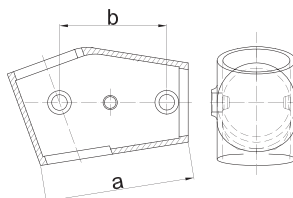
Code	Fit Size (mm)	Dimensions (mm)			
		a	b	c	d
* SDA252D	48.3	126	172	65	101

Cast Iron Round Pipe Fitting
Angle Base Flange



Code	Fit Size (mm)	Dimensions (mm)			
		a	b	c	d
*SDA252ZD	48.3	127	165	92	88

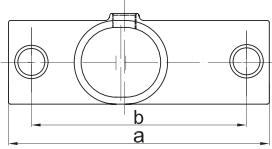
Cast Iron Round Pipe Fitting
Angle T-Clamp



Code	Fit Size (mm)	Dimensions (mm)			
		a	b	c	d
*SDA253ZD	48.3	115	86		

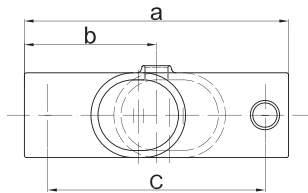
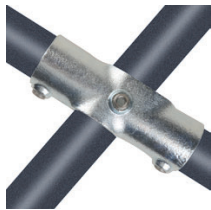
Cast Iron Pipe Fitting System

Cast Iron Round Pipe Fitting
T-Clamp (Offsite)



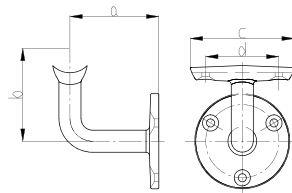
Code	Fit Size (mm)	Dimensions (mm)			
		a	b	c	d
*SDA255ZD	48.3	187	154		

Cast Iron Round Pipe Fitting
Angle Cross Clamp



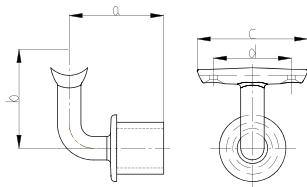
Code	Fit Size (mm)	Dimensions (mm)			
		a	b	c	d
*SDA256ZD	48.3	187	93.5	154	

Cast Iron Round Pipe Fitting
Handrail Bracket



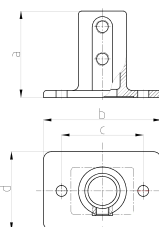
Code	Fit Size (mm)	Dimensions (mm)			
		a	b	c	d
*SDA746C	42.4	76.5	80	90	63

Cast Iron Round Pipe Fitting
Handrail Bracket



Code	Fit Size (mm)	Dimensions (mm)			
		a	b	c	d
*SDA748C	42.4	76.5	80	90	63

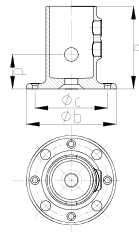
Cast Iron Round Pipe Fitting
Base Flange



Code	Fit Size (mm)	Dimensions (mm)			
		a	b	c	d
*SDAKF393C	42.4	110	150	104	100

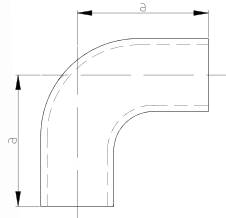
Cast Iron Pipe Fitting System

Cast Iron Round Pipe Fitting
Base Flange



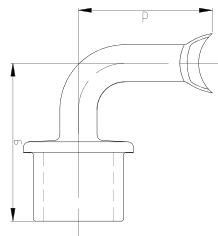
Code	Fit Size (mm)	Dimensions (mm.)			
		a	b	c	d
*SDAT132D	48.3	96	104	81.2	40

Cast Iron Round Pipe Fitting
90° Elbow



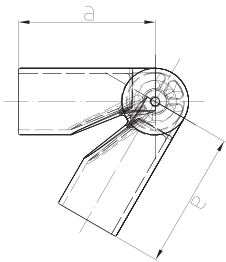
Code	Fit Size (mm)	Dimensions (mm)			
		a	b	c	d
*SDADDA-1	33.7	78.2			

Cast Iron Round Pipe Fitting
Handrail Bracket



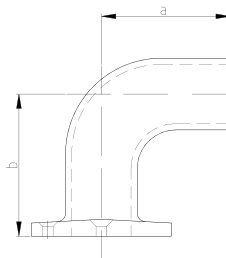
Code	Fit Size (mm)	Dimensions (mm)			
		a	b	c	d
*SDADDA-3		85	70		

Cast Iron Round Pipe Fitting
Swivel Elbow



Code	Fit Size (mm)	Dimensions (mm)			
		a	b	c	d
*SDADDA-5	42.4	88			

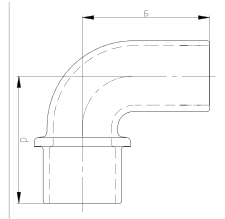
Cast Iron Round Pipe Fitting
Base Flange



Code	Fit Size (mm)	Dimensions (mm)			
		a	b	c	d
*SDADDA-2	33.7	78.2	86.2		

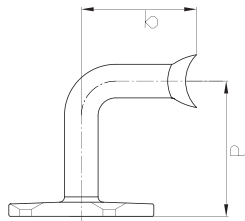
Cast Iron Pipe Fitting System

Cast Iron Round Pipe Fitting
Base Flange



Code	Fit Size (mm)	Dimensions (mm)			
		a	b	c	d
*SDADDA-4	33.7	78			

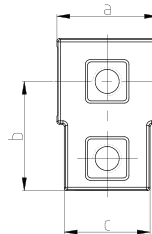
Cast Iron Round Pipe Fitting
90° Elbow



Code	Fit Size (mm)	Dimensions (mm)			
		a	b	c	d
√SDADDA-6		95	70		

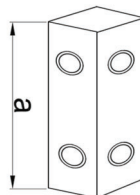
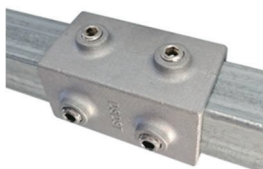
Aluminium Pipe Fitting System

Aluminium Square Pipe Fitting
T-Clamp



Code	Fit Size (mm)	Dimensions (mm)			
		a	b	c	d
*101F-20	20x20	35		23	
√SL-346	25x25	41		37	
√SL-347	30x30	50		43	
*101F-40	40x40	59		53	

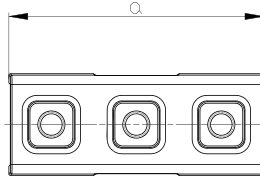
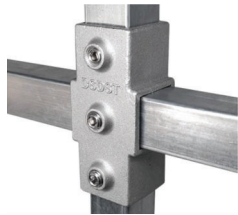
Aluminium Square Pipe Fitting
Straight Joint



Code	Fit Size (mm)	Dimensions (mm)			
		a	b	c	d
*149F-20	20x20	50			
√SL-360	25x25	60			
√SL-361	30x30	70			

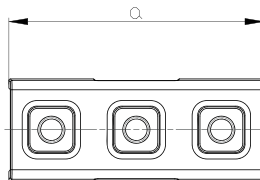
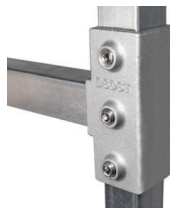
Aluminium Pipe Fitting System

Aluminium Square Pipe Fitting Cross Clamp



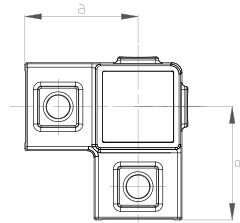
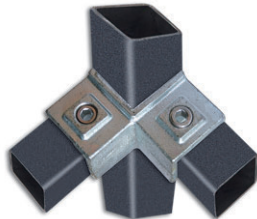
Code	Fit Size (mm)	Dimensions (mm)			
		a	b	c	d
*119F-20	20x20	72			
✓SL-356	25x25	84			
✓SL-357	30x30	93			
*119F-40	40x40	122			

Aluminium Square Pipe Fitting Cross Clamp



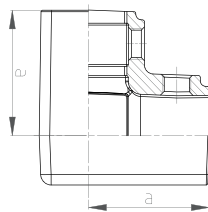
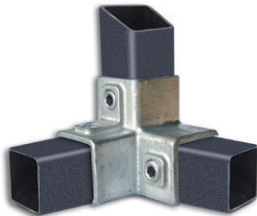
Code	Fit Size (mm)	Dimensions (mm)			
		a	b	c	d
*104F-20	20x20	72			
✓SL-354	25x25	84			
✓SL-355	30x30	93			
*104F-40	40x40	122			

Aluminium Square Pipe Fitting 4-Way Clamp



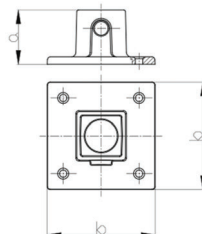
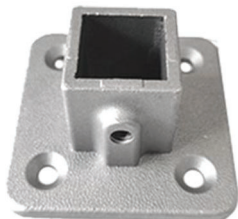
Code	Fit Size (mm)	Dimensions (mm)			
		a	b	c	d
*128F-20	20x20				
✓SL-350	25x25	42			
✓SL-351	30x30	47			
*128F-40	40x40	61			

Aluminium Square Pipe Fitting 3-Way Clamp (Close)



Code	Fit Size (mm)	Dimensions (mm)			
		a	b	c	d
*104F-20	20x20				
*SL-353	25x25	42			
*SL-352	30x30	47			
*104F-40	40x40	61			

Aluminium Square Pipe Fitting Base Flange



Code	Fit Size (mm)	Dimensions (mm)			
		a	b	c	d
*131F-20	20x20	36	75		
*SL-358	25x25	41	80		
*SL-359	30x30	43	85		

WEIGHT REFERENCE TABLE

SOLID ROUND BARS

Nominal Dia. (mm)	Imperial Equivalent (Inch)	Kg / m
Ø6.0	0.236	0.222
Ø8.0	0.315	0.400
Ø10.0	0.394	0.624
Ø12.0	0.472	0.899
Ø16.0	0.630	1.598
Ø18.0	0.709	2.023
Ø20.0	0.787	2.498
Ø22.0	0.866	3.022
Ø25.0	0.984	3.902

SOLID SQUARE BARS

Nominal Size (mm)	Imperial Equivalent (Inch)	Kg / m
8.0	0.315	0.500
10.0	0.394	0.788
12.0	0.472	1.140
14.0	0.551	1.550
16.0	0.630	2.030
20.0	0.787	3.170

MILD STEEL FLAT SHEET

Sheet Thickness (mm)	Kg / m ²
0.80	6.60
1.00	7.95
1.20	9.54
1.60	12.72
2.00	15.90
2.50	19.63
3.00	23.55

MILD STEEL TREADPLATE

Sheet Thickness (mm)	Kg / m ²
3.00	25.04
4.00	33.39
5.00	41.73
6.00	50.09
8.00	66.78
10.00	80.60

GALVANISED STEEL FLAT SHEET

Sheet Thickness (mm)	Kg / m ²
0.55	4.71
0.75	6.28
0.95	7.85
1.15	9.42
1.55	12.56
2.00	15.66
2.50	19.85
3.00	23.89

For all other sections, weight can be calculated using the formula:

Cross-section Area (mm²) x 0.00785 = Mass (kg/m).

METRIC TO GAUGE CONVERSION TABLE

Gauge	26	24	23	22	21	20	19	18	17	16	15	14	13	12	11
Thickness	0.55	0.70	0.80	0.95	1.20	1.40	1.60	1.90	2.00	2.40	2.60	2.90	3.00	3.20	3.50

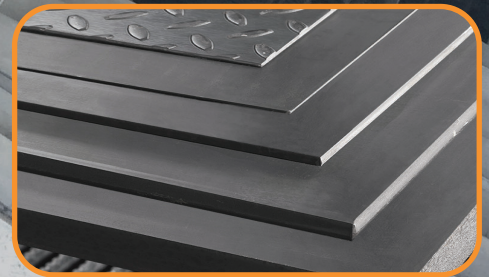
TENSILE STRENGTH CONVERSION TABLE

tons/in²	p.s.i	kg/mm²	MPa
16	37,000	25.8	250
20	45,000	31.6	309
23	51,500	36.5	355
26	58,000	40.8	402
29	65,000	45.7	448
30	67,000	47.1	463
29	65,000	45.7	448
30	67,000	47.1	463
32	72,000	50.6	494
33	74,000	52.0	510
35	78,500	55.5	541
36	81,000	57.0	556
39	87,500	61.8	602
40	90,000	63.3	618
42	94,000	66.0	649
45	101,000	71.0	695
46	103,000	72.5	710
49	110,333	77.3	757
50	112,000	78.8	772
52	116,500	82.0	803
55	123,000	86.5	849
58	130,000	91.4	896
60	134,500	94.5	927
62	139,000	97.7	958
65	146,000	102.6	1004
68	153,000	107.5	1050
70	157,000	110.4	1081
71	159,000	111.8	1097
75	168,000	118.0	1158
78	175,000	123.0	1205
80	180,000	126.0	1236
81	182,000	128.0	1251
84	188,000	132.2	1297
85	190,000	133.6	1313
88	197,000	138.5	1359
90	202,000	142.0	1390

tons/in²	p.s.i	kg/mm²	MPa
91	204,000	143.4	1405
94	210,000	148.4	1452
95	213,000	149.7	1467
97	217,000	152.6	1498
100	224,000	157.5	1544
104	233,000	163.8	1606
105	235,000	165.4	1622
107	240,000	168.5	1653
110	246,500	173.2	1699
113	253,000	178.0	1745
115	257,000	181.1	1776
117	262,000	184.3	1807
120	269,000	189.0	1853
123	275,500	194.0	1900
125	280,000	197.0	1931
126	282,500	198.0	1946
130	291,000	205.0	2000
133	298,000	209.0	2054
135	302,400	213.0	2085
136	304,500	214.0	2010
140	313,600	221.0	2162



SD
ALUMINIUM



Contact Us Now!

Auckland Rosedale Branch

Address: 6 John Glenn Ave, Rosedale,
Auckland 0632

Email: info.albany@sdalu.co.nz

Phone: 09 - 218 2188
09 - 218 2111

Auckland Manukau Branch

Address: 28 Ryan Pl, Manukau City,
Auckland 2104

Email: info.manukau@sdalu.co.nz

Phone: 09 - 217 8666

Christchurch Wigram Branch

Address: 67 Vickers Rd, Wigram,
Christchurch 8042

Email: info.chch@sdalu.co.nz

Phone: 03 - 366 6669

Follow Us on Social Media

